



CREATING DYNAMIC LEARNING COMMUNITIES  
at school • at home • at work



**Schools Exceeding Expectations (SEE) Conference**  
Maryville, Tennessee – April 29-May 2, 2009

# Curriculum Mapping

## Standards with the Brain in Mind

**~ BRING a Copy of YOUR GRADE-LEVEL ~  
STATE STANDARDS to this Hands-On Session**


*Presented by TJ Mears*

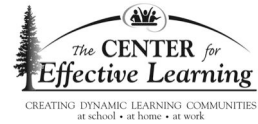
**2009 SEE Conference – Friday, May 1, 2009**

Susan Kovalik & Associates, Inc.  
*dba* **The Center for Effective Learning**  
33506 10<sup>th</sup> Place South Federal, WA 98003  
253.815.8800 Fax 253.815.8816  
[www.theCenter4Learning.com](http://www.theCenter4Learning.com)

## NOTE TO TEACHERS ATTENDING

- Educators attending this session will need to bring a copy of standards and/or benchmarks for their grade level and content area. This session will provide a hands-on experience with mapping state standards while using current brain information.

HET - Susan Kovalik and Associates 



## Mapping Standards with the Brain in Mind

Presented by – TJ Mears  
Schools Exceeding Expectations  
Conference

Maryville, Tennessee  
HET - Susan Kovalik and Associates 


## STANDARD

- An average or normal requirement, quality, quantity, level, grade, etc.
- A requirement for minimum performance.
- The goal

HET - Susan Kovalik and Associates 

## Map


- plan, delineate, or arrange in detail
- make a design of; plan out in systematic, often graphic form
- Design that defines the scope and sequence of a plan.

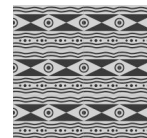
HET - Susan Kovalik and Associates 

## Patterns

“A pattern is an entity such as an object, action, procedure, situation, relationship, or system, which may be recognized by substantial consistency in the **clues** it presents to the brain, which is a pattern detecting apparatus.”

Leslie Hart  
*Human Brain & Human Learning*

HET - Susan Kovalik and Associates 



Concepts identify patterns  
for learners related to  
content.

HET - Susan Kovalik and Associates 

